



Livestock pens and workers herding sheep at the Union Stock Yards, Chicago, c. 1910. CHM, ICHI-019106; Barnes-Crosby Company, photographer

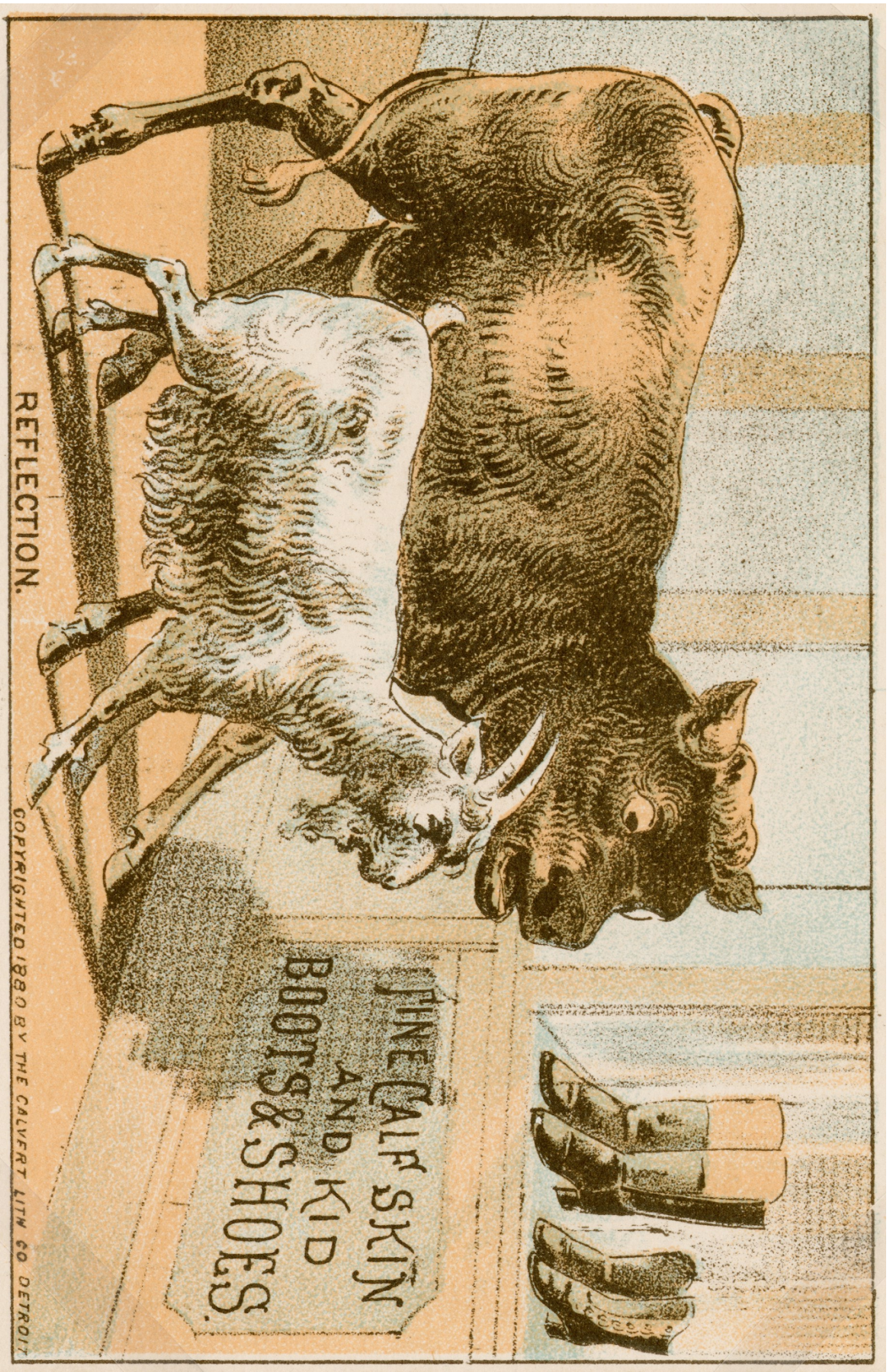
City on the Make: Impact of the Stockyards and

Meatpacking Industries

Gallery Video Image Packet



CHICAGO HISTORY MUSEUM



Trade card for A. Kahn, dealer of fine calfskin and kid boots and shoes, 1880. Created by Calvert Litho Co., Detroit. CHM, ICHI-040944





Two employees fold hides at Swift & Co., Chicago, c. 1950. CHM, ICHI-021357

City on the Make: Impact of the Stockyards and
Meatpacking Industries
Gallery Video Image Packet



(2)

S. E. GROSS, CHICAGO.

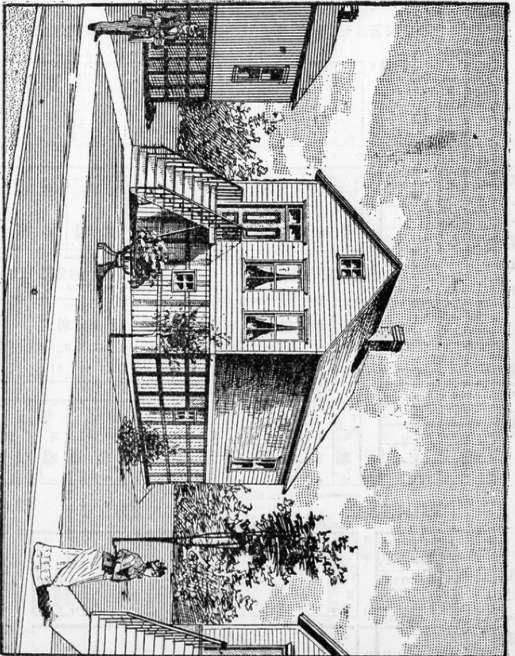
THE WORKING MAN'S REWARD.

WHERE ALL WAS DARKNESS, NOW IS LIGHT.

S. E. GROSS, CHICAGO.

(2)

A HOME FOR \$100
In my Ashland Avenue and 47th Street Subdivision.



LOCATION:

These handsome cottages are located on 47th St. and Lavin St., between 45th and 46th Sts., (see plat of property on page 61)

DESCRIPTION:

They are well built and thoroughly finished throughout. Have seven foot basement lake water, sewers and large lot. Sidewalks laid and fences built.

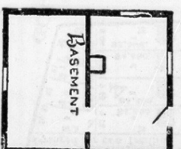
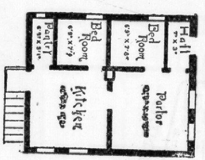
TERMS:

FIRST FLOOR: Price \$1,050 to \$1,500; \$100 cash, balance on long time and monthly payments of \$9 to \$11, same as rent.

BRANCH OFFICE AND HOW TO GET THERE.

Branch Office corner of 47th St. and Ashland Ave. Open every day. Take Archer and Ashland Aves. cars, or Halsted and 47th Sts. cars; either will take you to the office door; or take Grand Trunk R. R. trains to Ashland Ave. station and go two blocks north; or call at Main Office and you will be taken free to see the property.

South-east corner Dearborn and Randolph Sts.



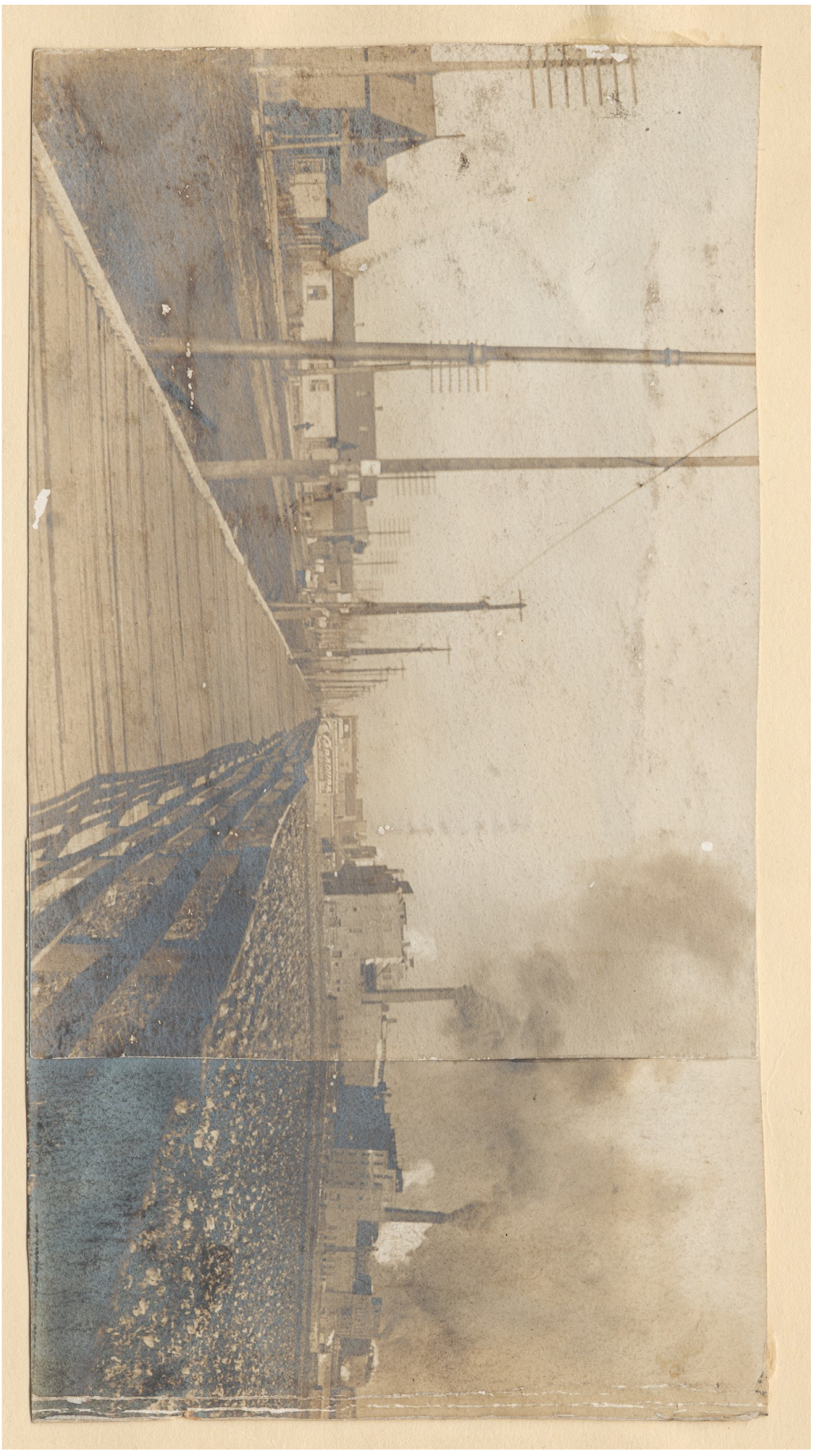
Advertisement for working family's cottage in Back of the Yards published in S. E. Gross 10th annual catalog, c. 1890. CHM, ICHI-003649



CHICAGO HISTORY MUSEUM

City on the Make: Impact of the Stockyards and Meatpacking Industries
Gallery Video Image Packet

5.



A photograph showing houses, a wooden plank sidewalk, smokestacks and industrial buildings, and cabbage fields in Chicago's Back of the Yards neighborhood, c. 1905. CHM, ICH-022431

City on the Make: Impact of the Stockyards and

Meatpacking Industries

Gallery Video Image Packet



CHICAGO HISTORY MUSEUM



Gallery Video Image Analysis

Look closely at the image to answer the questions below.

1. Make a list of the objects and figures you see in the image. What inferences can you make from these observations?

2. Which parts of the image are the most significant? Why?

3. What was the photographer or artist's intention in taking/making the image?

4. What point of view or perspective is not included in the image?

5. What does this image tell us about life in Chicago at the time it was created?

6. Write a title and a caption for this image.



Gallery Video Image Analysis

Put yourself inside the image. Imagine taking a walk around the scene.

1. What do you see, hear, and smell?

2. What things could you touch, feel, or taste?

3. What do your clothing feel like? Are they comfortable?

4. Have you been to a place like this before? How was it similar or different?

5. What does this image tell us about life in Chicago at the time it was created?

6. Write a title and a caption for this photograph.