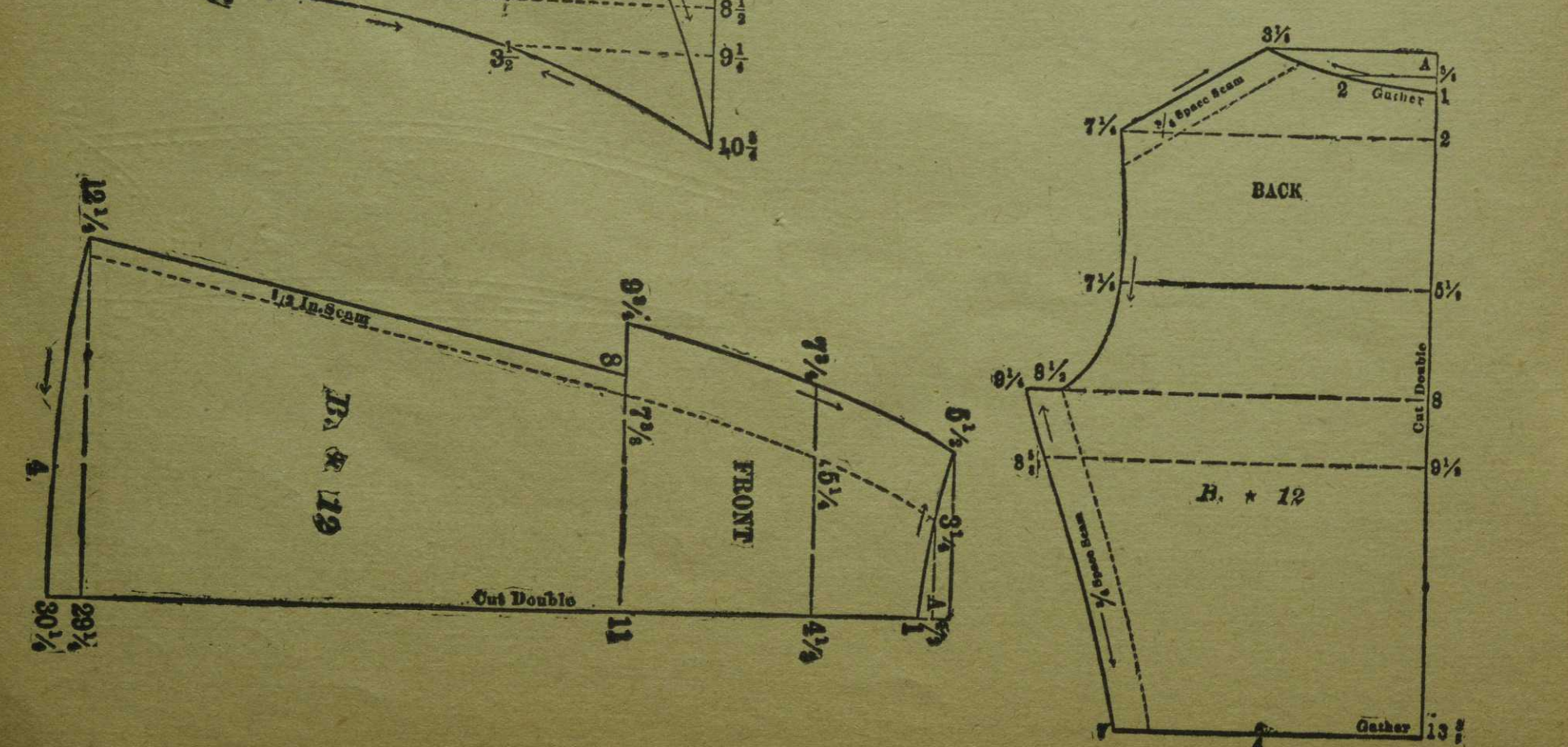
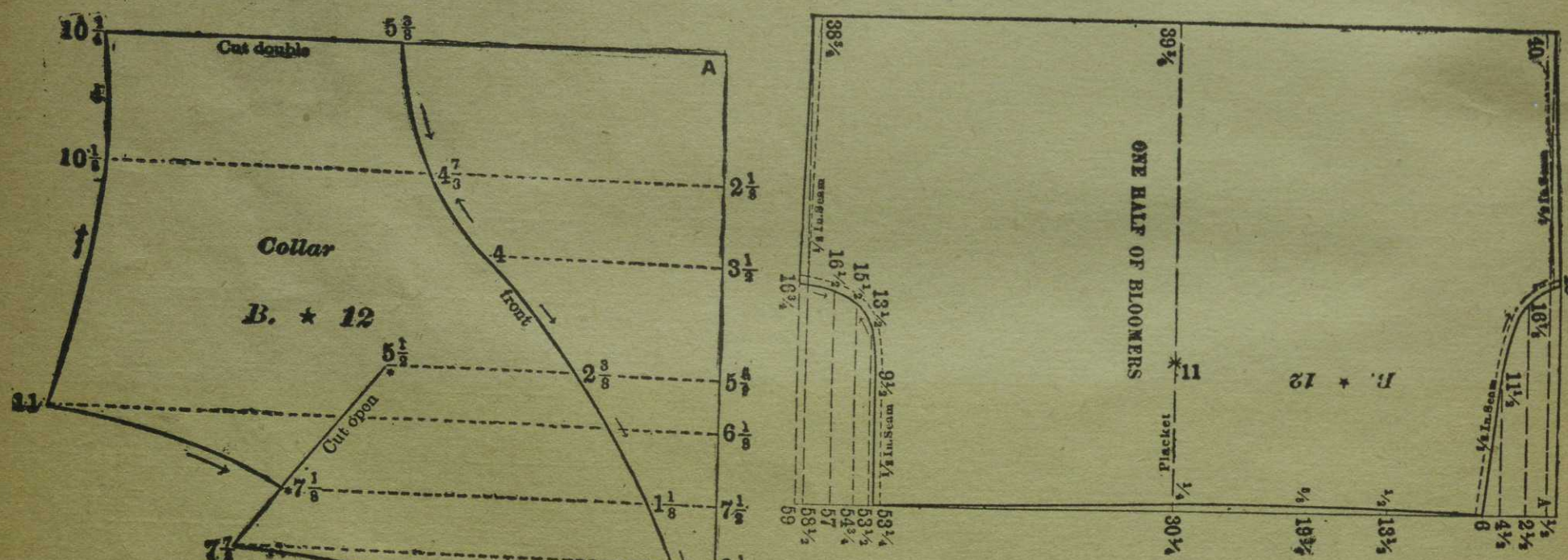
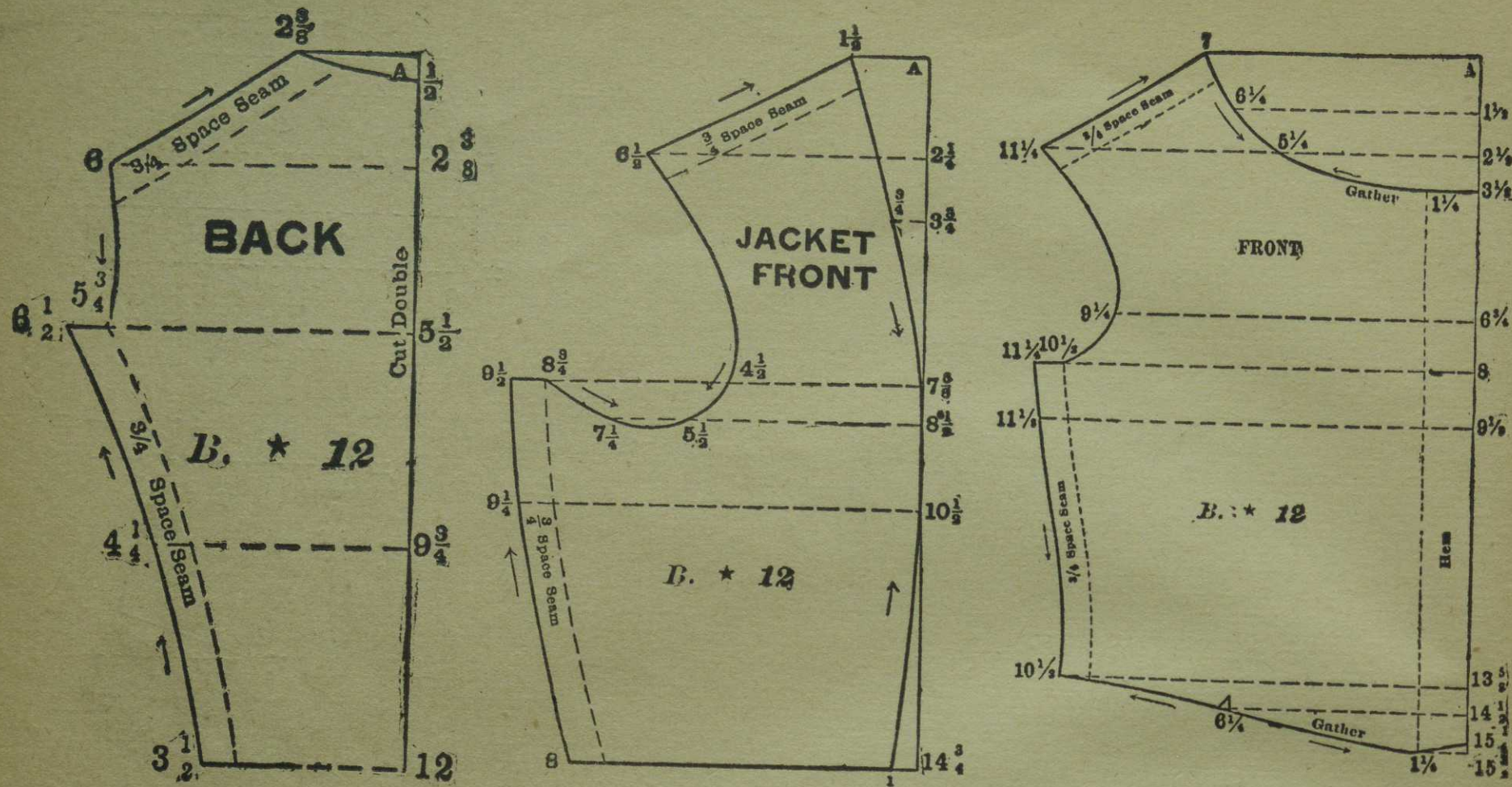
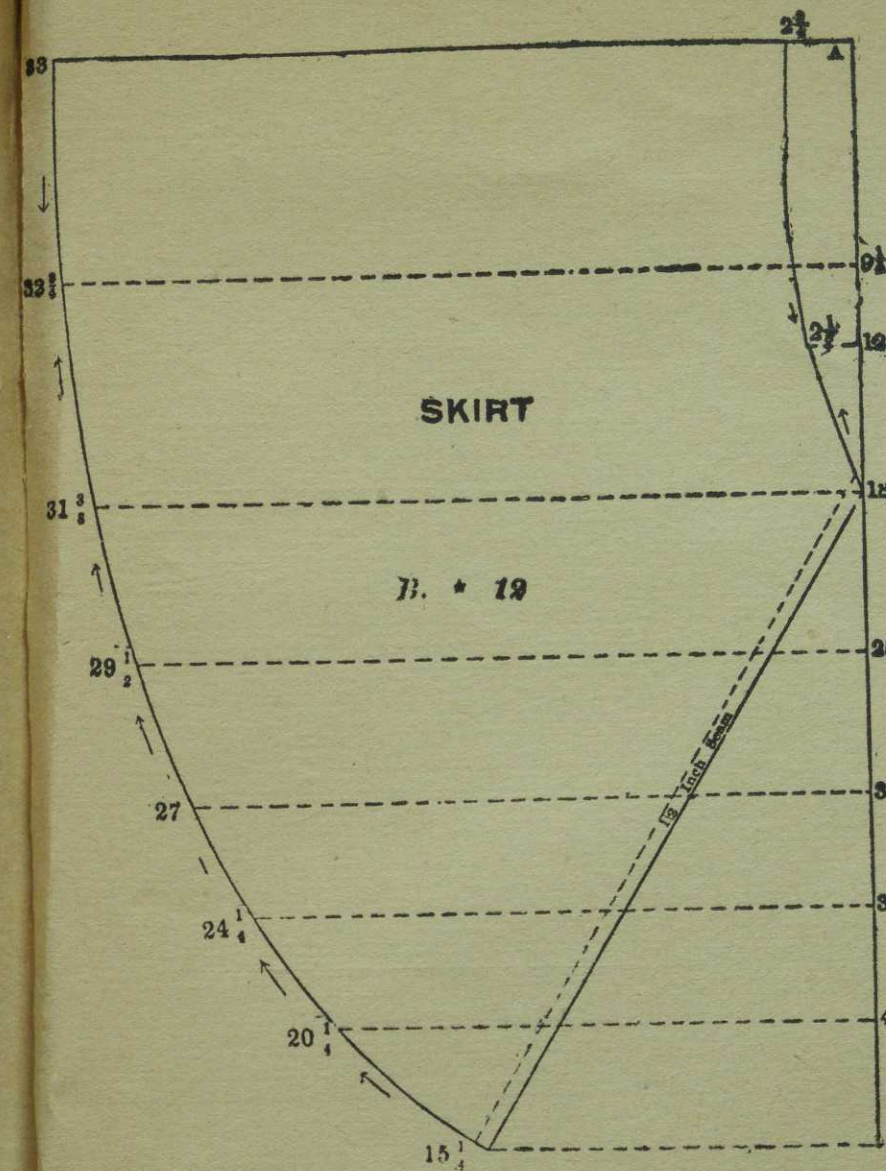


Use the scale corresponding with the bust measure to draft the waist and jacket, which consists of full back and front waist portions, jacket back and front, large collar for jacket, small collar for full waist, and two sleeve portions. If desired, an ordinary shirt waist sleeve may be made for the full waist so that it may be worn without the jacket. The jacket is lined with silk and the reverses are faced back with velvet. Collar is of white linen. The suit is of small check wool goods. The leggings are of plain goods, of a color to match balance of suit. Draft the skirt and bloomers with scale corresponding with the waist measure. There are two skirt portions, bloomers and lining for bloomers. Thirty-three scale was used to draft fourteen calf measure for leggings. Use tape measure to regulate the length. Get skirt on page 81. Lining for bloomers on page 82.

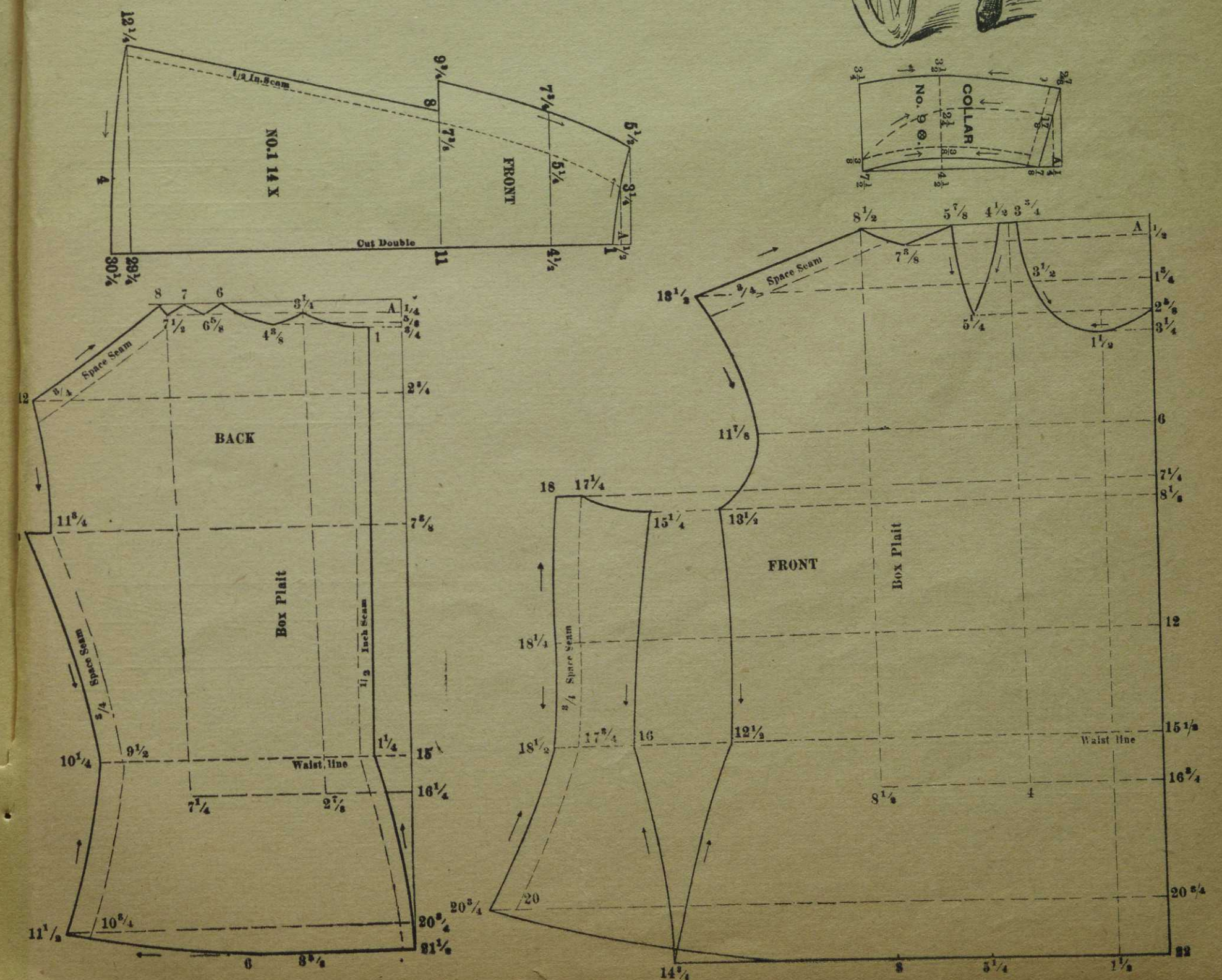
Bicycle Suit—Continued.



Ladies' Bicycle Costume.



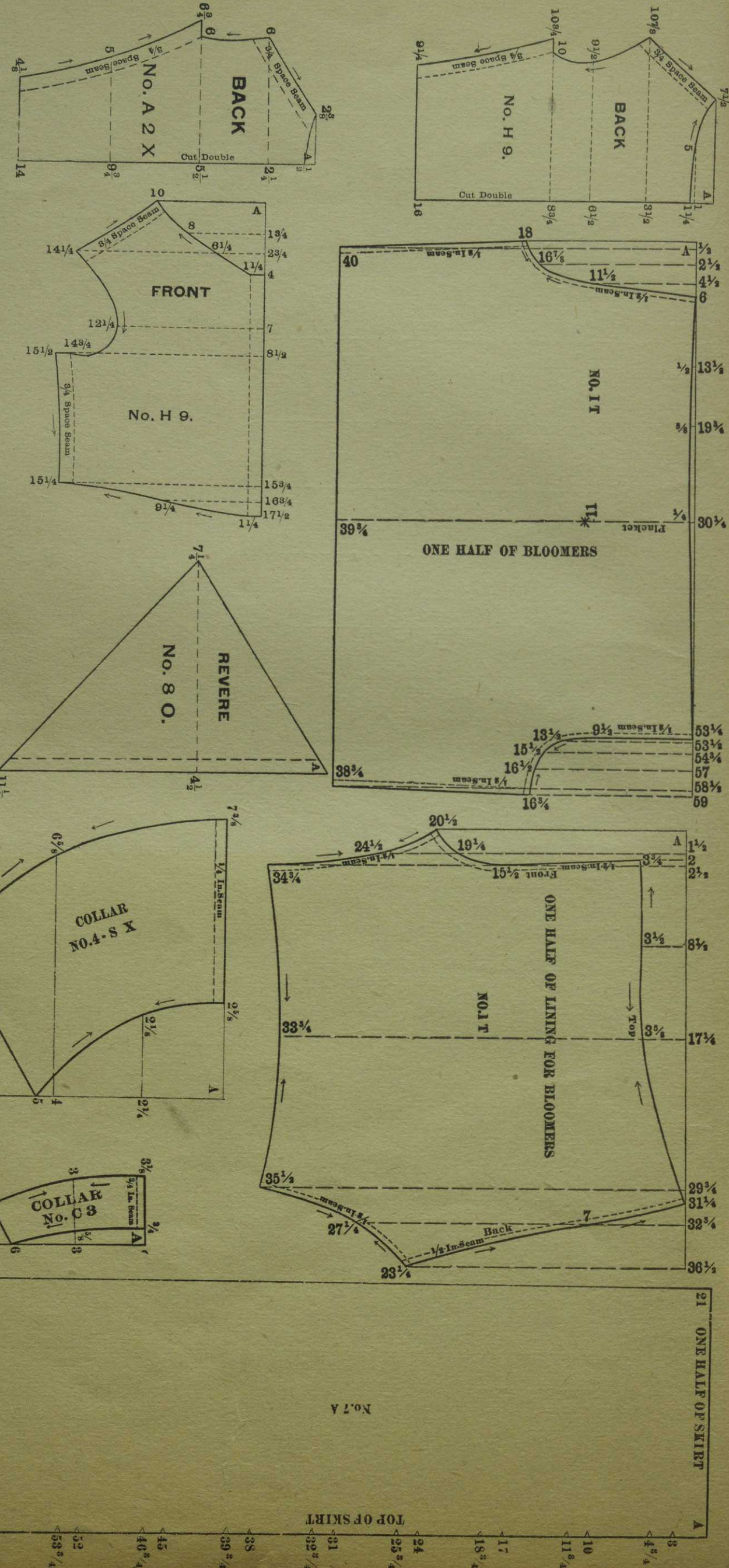
Use the scale corresponding with the bust measure to draft the entire waist and sleeves which consists of front, back, collar and two sleeve portions. Lay the pleats in waist according to the notches, two box pleats in the front and two in the back. Make a belt of the same material. Use sleeves given on page 79. The bloomers are drafted by waist measure. Gather the outside and sew to lining portion. Draft skirt by waist measure. It is in two pieces: front and back. Make to come to bottom of bloomers when finished. Make of corduroy, or if of lighter weight material interline the front with canvas or hair-cloth to keep it in place. Regulate length to suit. Get bloomers on page 80 and lining for bloomers on page 82.



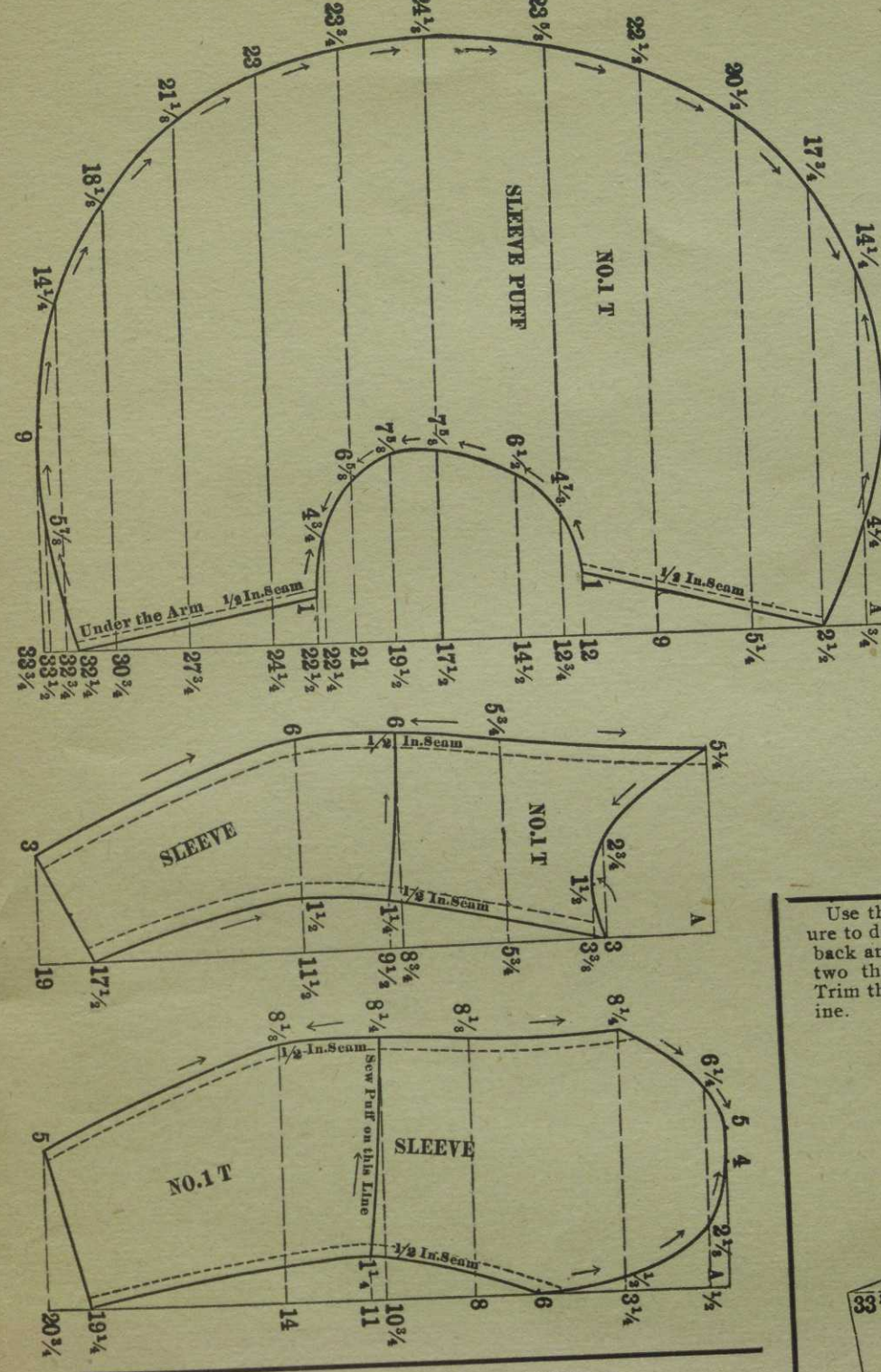
Ladies' Bicycle Costume.



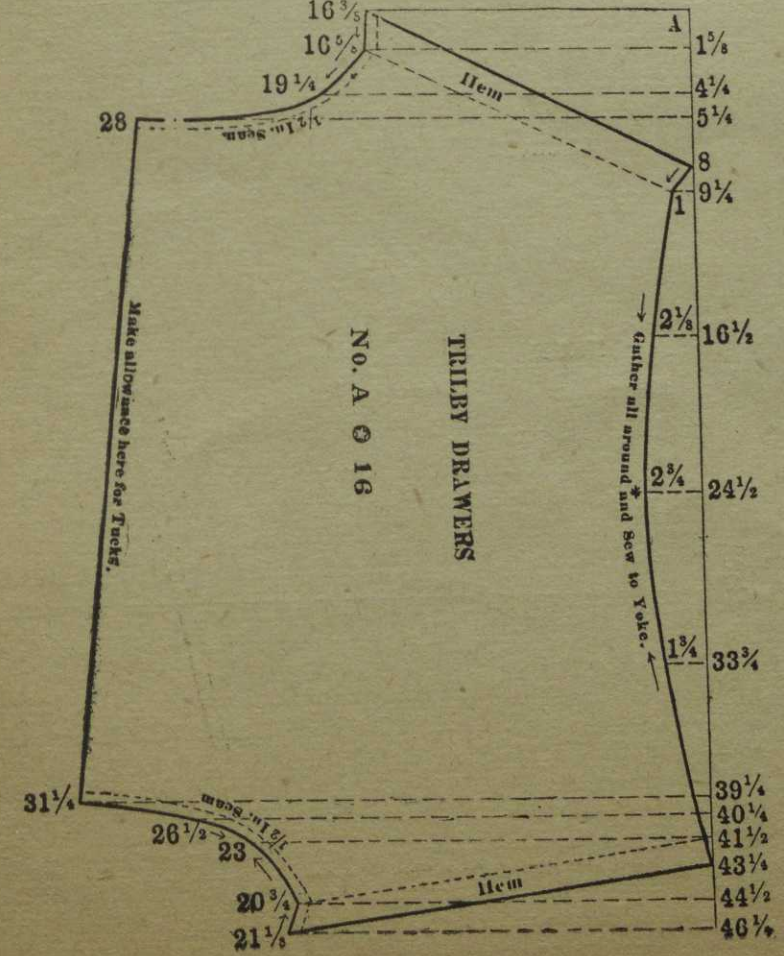
Use the scale corresponding with the bust measure to draft the entire waist and sleeves, which consists of front, back and collar for the waist; front, back, reverse and collar and three sleeve portions for the jacket. This sleeve is sometimes called the Ferris wheel sleeve; it is suitable for waist or jacket. Sew the top in the sleeve plain; gather the bottom and sew to the curved lines on the sleeve above the elbow. Draft the bloomers, lining and skirt by the waist measure. Gather the outside and sew to the lining. **These can be worn without the kilt skirt, but it surely is more lady-like to wear the kilt skirt** Regulate the length by the tape measure. Lay plaits in skirt according to notches.



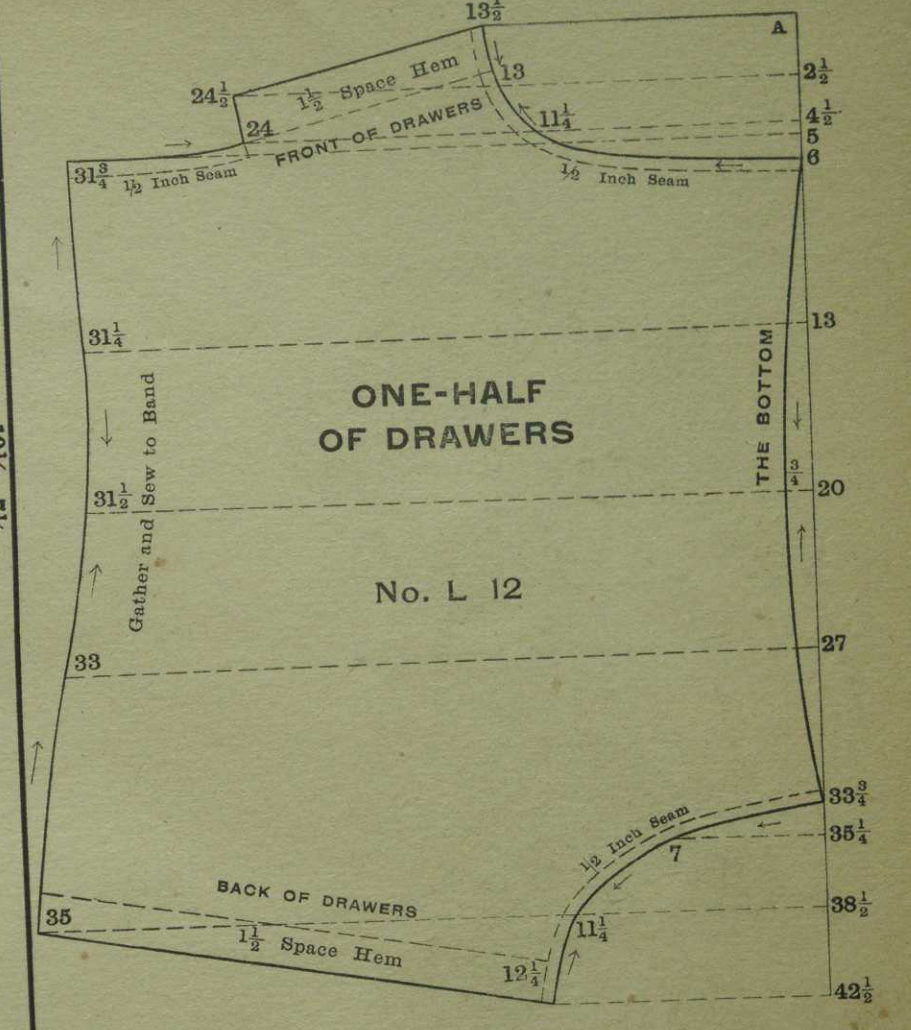
Ladies' Bicycle Costume—Continued.



LADIES' TRILBY DRAWERS Use scale corresponding with waist measure to draft entire garment. Use Yoke pattern on this page. Regulate length to suit.



Ladies' Drawers.



Use the scale corresponding with the waist measure to draft the entire garment. Hem the front and back and gather at the top and sew to yoke. Cut two thicknesses for the yoke, to make it strong. Trim the bottom to suit. Regulate length by tape measure.

